

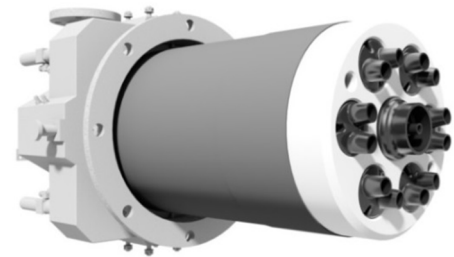
Data Sheet

REGEMAT 350

WS Wärmeprozessstechnik GmbH
 Dornierstraße 14
 D-71272 Renningen
 Tel.: +49 7159 / 16320
 Fax: +49 7159 / 2738
 @: ws@flox.com
 web: www.flox.com



Regenerative FLOX®-Flame Burner



<p>Gross Capacity</p>	Power Rating	up to 200 kW
	Boost	up to 400 kW
	Efficiency	>80%
<p>Fuel</p>	Natural Gas	natural gas, methane
	Other Gases (Option)	propane, butane and other dust-free non aggressive clean gases
<p>Supply Pressure</p>	Fuel	6.000 Pa (60 mbar), ±5%
	Combustion Air	8.000 Pa (80 mbar), ±5%
	Compressed Air	600.000 Pa (6 bar), ±5%
	Suction Pressure	-8.000 Pa (-80 mbar), ± 5%
		(exhaust extraction rate approx. 80%)
<p>Max. Temperature</p>	Direct Heating	1.250°C
<p>Flame Safety</p>	Ionization	with the help of electrode(s)
	UV-Cell (Option)	the burner is prepared to accept a UV-cell
<p>Combustion Mode</p>	FLOX®/Flame	above 850°C in FLOX® mode
	FLOX®	FLOX® mode above 850°C
<p>Burner Control</p>	On / Off / Boost	pulse firing

» Customized Solutions available on Request «

NO_x-Emissions

Common limits (<350 mg at 3% O₂) are met in all configurations.
 Values <100 mg at 3% O₂ can be achieved in special configurations.

Please consider the general remarks about our data sheets.